

APPLICATION FOR ADMISSION



Psy.D. Clinical Psychology Program

ANTIOCH
UNIVERSITY
SEATTLE

Contents



Accreditation/Licensure:

Antioch University Seattle is accredited by the Commission on Institutions of Higher Education of the North Central Association of Colleges and Schools, 30 N. LaSalle St., #2400, Chicago, IL 60602-2504, 800-621-7440. Antioch University Seattle is also committed to seeking APA-accreditation for the Psy.D. program.

The Psy.D. program at Antioch University Seattle was founded in 2004, and offers doctoral education and training in clinical psychology to prepare students for competent entry into the practice of professional psychology. The Doctor of Psychology program meets Washington's state licensure requirements for clinical psychology.

This publication also is available in alternative format upon request. For more information, please contact the Disability Support Services Office at 206-268-4151.

The Psy.D. Clinical Psychology program requires self-reflection that may involve disclosing private information.

About Antioch University.....	3
Doctor of Psychology Program	4
Curriculum & Degree Requirements	6
Application Process	9
Financial Assistance.....	12
Forms	
Psy.D. Application for Admission form	13
Letter of Recommendation Form.....	15
Professional Experience for Psy.D. Admission Form.....	17
Psy.D. Experience and Prerequisites Form	19
Request for Official Transcript	21

Doctor of Psychology Program Outcomes

Time to Completion. Of the 29 graduates from 2004 to 2011, time-to-completion of the program for full time students with a M.A. degree is on average 5 years (median) or 4.5 years (arithmetic mean), for students entering with a BA degree the average time-to-completion is 5 years (median and mean). Full-time students can complete the program between 4.3 years (mean) and 5 years (median), whereas part-time students can expect on average at least 6 years to matriculate (mean and median).

Program Attrition. The Psy.D. program attrition data by cohort reveals a decreasing rate of attrition over time.

According to the Ph.D. Completion Project (Council of Graduate Schools, 2007), the one-year attrition rate for Psychology was 23% compared with our program's overall rate of 28.5% and our most recent three-year rate of 21.1%.

Post Graduate Licensure Rates.

Of the total of 29 graduates since 2004, 17 (59%) have taken the national licensing examination for psychologists (EPPP), and 100% have passed, with all but one passing the first attempt. At present, 5 other graduates are preparing to take the EPPP. AUS Psy.D. graduates are licensed in Washington State, New York, California, and Canada.

KEY CONTACTS

Admissions Office toll free	206-268-4202 888-268-4477	admissions.aus@antioch.edu
Financial Aid Office toll free	206-268-4010 888-268-4477	financialaid.aus@antioch.edu
Visiting Campus	206-268-4202	www.antiochseattle.edu/visit
Directions to Campus	206-441-5352	www.antiochseattle.edu/map

Please note: You may use this application packet or apply online at www.antiochseattle.edu

Learn More About Antioch University Seattle

At all stages of your admission process, Antioch Seattle provides ways to get the information you need to move toward your goals.

Quarterly Open Houses

Learn in-depth information about a specific program during an evening event where you'll have an opportunity to meet faculty, students and alumni. For the date of the next Open House, visit www.antiochseattle.edu/visit.

Appointment with an Admissions Counselor

This is a one-on-one opportunity to discuss a specific program of interest. An admissions counselor can discuss how your past experience – both academic and professional – relates to the program requirements and outcomes.

Admissions counselors are available days and evenings, Monday through Friday. Office visits and telephone appointments are equally available.

Call the Admissions Office for more information or to make an appointment at 206-268-4202.

Visit a Class

You may sit in on a class to see if Antioch is the right learning environment for you. Speak to an admissions counselor to schedule.



About Antioch University

Antioch University (AU) is a bold and enduring source of innovation in higher education. With roots dating back to 1852 and inspired by the work of pioneering educator Horace Mann, Antioch University was established in 1964 as a vital, vocal advocate for higher education that promotes the common good, values experiential learning and draws on the strength of a diverse academic community.

AU serves more than 5,000 adult students at five campuses across the country and around the world online. Each campus offers degree programs that meet—and often anticipate—the pressing needs of its region and the wider world.

Antioch University Los Angeles has been nationally recognized for its top-five ranked low-residency MFA in creative writing and the first-of-its-kind graduate clinical psychology specialization in lesbian gay bisexual transgender (LGBT) studies. Its newest program, the MA in urban sustainability, was developed in response to the growing awareness of the interconnections among environmental, economic, and social issues.

Antioch University Santa Barbara offers an MA in education with an emphasis on social justice and leadership. Surrounded by sandy beaches and the Santa Ynez Mountains, AUSB offers a lively, intensive undergraduate education and rigorous, real-world graduate degrees.

Antioch University Midwest has developed a cutting-edge program in conflict analysis and engagement. Located in the independently minded and progressive town of Yellow Springs, Ohio, AUM's coursework is collaborative and experiential, designed to meet adult learners where they are and help them achieve their educational goals and effect social change.



Antioch University Los Angeles



Antioch University Midwest



Antioch University New England



Antioch University Santa Barbara



Antioch University Seattle

Antioch University New England is home to one of the nation's only Waldorf teacher preparation programs and a Green MBA program ranked in the top 5 nationally. Located in Keene, New Hampshire, AUNE is steeped in New England's traditions of self-reliance, local initiative, and private action for the public good, with students hailing from over 40 states and 19 foreign countries.

The **Antioch University Seattle** community of students, faculty, and staff promote education for social engagement with an emphasis on sustainability. AUS offers undergraduate and graduate degrees including a doctorate in clinical psychology.

The PhD in Leadership and Change is a University-wide low-residency program that cultivates current and future generations of civic, professional, and academic leaders. Students come from all over the country and the world, participating in quarterly residencies and rotating to the various Antioch campuses.

Antioch Education Abroad is an exceptional slate of immersive service and study programs. From Buddhist Studies in Japan and Arts and Culture in Mali to Brazilian Ecosystems, AEA develops and offers unique study-abroad programs on four continents offering students mentorship by on-site faculty who are experts in their respective fields.

WYSO is a leading public radio affiliate and an essential source of global news and opinion, located on the Yellow Springs campus. It is the top-ranked public radio station serving the Dayton metropolitan area and the region's primary source for top-rated news programs.

**ANTIOCH
UNIVERSITY**

www.antioch.edu

Doctor of Psychology Program



The Psy.D. program uses a practitioner/scholar model, meaning that clinical training is emphasized, along with a foundation in research design and an emphasis on evidence-based practices to educate students as professionals in clinical psychology and as scholars in psychology in order to promote health, education, social justice, and human welfare. To accomplish this, we have identified three broad goals and nine objectives. Below are the goals, objectives, and competencies for our program:

Goal #1: Graduates function as professional psychologists in multiple roles.

Objective 1.A: Students intervene to alleviate suffering and promote health.

Competency: Intervention

Objective 1.B: Students assess clients and communicate their findings.

Competency: Assessment

Objective 1.C: Students design, analyze, and report on research and evaluations.

Competency: Research & Evaluation

Objective 1.D: Students accept and offer supervision and consultation.

Competency: Supervision & Consultation

Goal #2: Graduates are reflective practitioner/scholars.

Objective 2.A: Students build meaningful relationships with clients, organizations, and their community.

Competency: Relationship

Objective 2.B: Students integrate science with theory and practice.

Competency: Scientific Knowledge and Methods

Objective 2.C: Students practice ethically and professionally.

Competencies: Ethical/Legal Standards & Policy Professionalism

Goal #3: Graduates are socially responsible and work for social justice.

Objective 3.A: Students celebrate diversity and avoid oppressing others.

Competency: Individual/Cultural Diversity

Objective 3.B: Students are agents of social change.

Competency: Advocacy

Concentration Options

Concentrations provide the student with a spectrum of theoretical perspectives and concomitant practical experiences supported through professional seminars.

Concentrations in the past have included:

- Adult Psychotherapy
- Child Clinical Psychology
- Forensic Psychology
- Health Psychology

Visit www.antiochseattle.edu/psyd for details about current offerings.

An academic, non-clinical M.A. in Psychology degree is awarded after satisfactory completion of 60 required credits.

Attendance Options

Classes are offered on Thursday evenings, Fridays and Saturdays. Students are considered full-time if they take 9 or more credits per quarter. Any number of credits less than that is considered part-time.

Qualifications for Licensure

The curriculum meets Washington state licensure standards for clinical psychology.

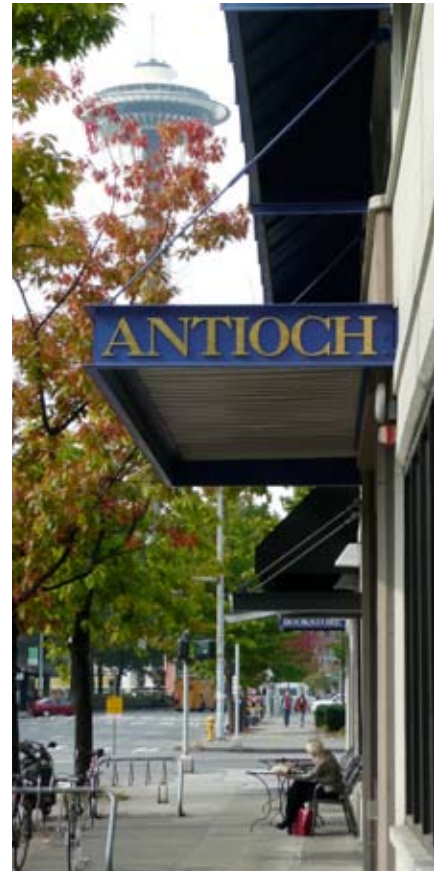
Faculty

Faculty in the Psy.D. program are experienced teachers, clinicians, researchers, and social advocates and some are well-known in both state-wide and national psychology organizations. Faculty members balance traditional and contemporary perspectives in the field of psychology, educating students to become informed and effective practitioners and scholars. Most also see patients in private practice.

Visit www.antiochseattle.edu/psyd for complete faculty information.

Features of the Psy.D. in Clinical Psychology program at Antioch include:

- Antioch University provides doctoral-level study and training in the theory and application of clinical psychology. The curriculum promotes values of ethical practice and social responsibility.
- After completion of the first year residency defined as completion of at least nine credits per quarter, for three consecutive quarters, there is flexibility to pursue the doctoral program full or part time.
- Coursework and clinical training are framed in terms of achieved competencies; performances that demonstrate those competencies are archived for student and faculty use in a personal electronic portfolio.
- Two basic and three elective concentrations from which to choose
- Elective course options that round out the program
- Practical experiences integrated throughout the program, including a full-year internship
- Clinical focus with flexibility to choose a clinically-oriented doctoral dissertation.
- On-site Community Counseling Clinic for supervised training



Curriculum & Degree Requirements

The Psy.D. program requires 150 quarter credits for graduation including the following courses. Up to 24 credits may be transferred. More information about transferring graduate credits is detailed on page 10.

Visit www.antiochseattle.edu/psyd for course descriptions and concentration options.

Core Courses

Courses are worth 3 credits each for a total of 130 credits. For students who already hold a master's degree in psychology, counseling or a related mental health field, some of the foundation courses may be waived based on a syllabus review.

- Cognition and Affect
- Community Psychology
- Ethics
- Group Therapy and Practice
- History of Psychology
- Learning Theory
- Life Span Development I - Child
- Life Span Development II - Adult
- Psychopathology
- Social Psychology
- Psychophysiology
- Psychopharmacology
- Medical Issues and Introduction to Psychopharmacology
- Theories: Cognitive/Behavioral
- Theories: Psychodynamic
- Theories: Humanistic
- Professional Issues in Career Management

Assessment Courses

- Assessment: Intelligence Testing
- Assessment: Intelligence Testing Practicum (1 credit)
- Assessment: Personality Inventories
- Assessment: Personality Inventories Practicum (1 credit)
- Assessment: Integrative
- Assessment: Integrative Practicum (1 credit)

Research Courses

- Dissertation Seminar I
- Dissertation Seminar II
- Dissertation Seminar III
- Dissertation Seminar IV
- Research Ethics, Quantitative Methods & Analysis I
- Quantitative Methods & Analysis II
- Qualitative Methods & Analysis I
- Qualitative Methods & Analysis II

Clinical Training Courses

While all the Psy.D. program courses combine theory and practice, these courses are specifically designed to support you while completing your clinical training experiences with group and individual supervision. Three first-year courses focus on developing clinical skills and multicultural competency while you engage in a community action research project:

- Diverse Cultures and Social Systems
- Diverse Ethnic Groups
- Multicultural Families as Social Basis of Behavior

Concentration

Basic concentrations consist of three theory courses linked to three professional seminars that are supervised practicums. These courses are taken within one academic year.

Electives

Depending upon the concentration you choose, and whether you choose additional areas of concentration, the number of required electives will vary. Generally, you will need 20 elective credits.

Graduation Requirements

In addition to the required courses included in the curriculum, you also must meet the following graduation requirements:

- Completion of a one-year residency defined as a minimum of nine credits each quarter, for three consecutive quarters, during the first-year in the Psy.D. program. Residency during an alternate year will be considered on a case-by-case basis, and only in light of personal exigencies;
- Successful completion of 150 graduate quarter credits from courses listed for degree (you may have had some courses waived as equivalent to graduate courses from another institution).
- One basic (Child Clinical Psychology or Adult Psychotherapy) concentration, and one elective (Forensic or Health Psychology) concentration, or both basic concentrations;
- Community Action Research Project and Community Practicum;
- Satisfactory ratings on annual faculty reviews;
- One performance archived in an electronic portfolio for all levels of ten core competencies;
- Successful passage of the presentation of a case study in the Clinical Oral Examination;
- Acknowledgement of satisfactory completion of dissertation by all dissertation committee members;
- Documentation of 50 hours of personal psychotherapy;
- Satisfactory completion of at least 1,500 hours from the Clinical Internship; and
- Students must finish the Psy.D. program within a maximum of eight years for coursework and two years for internship, for a total of 10-years.

Program requirements and course offerings are subject to change.

Psy.D. Competencies and Electronic Portfolio

The Psy.D. program is framed around 10 competencies that describe the multiple roles taken by professional psychologists. The competencies are: relationship, scientific knowledge and methods, individual/cultural diversity, ethical/legal standards and policy, professionalism, assessment, interventions, research and evaluation, supervision and consultation, and advocacy. Benchmarks are the developmental steps to achieve each competency. All Psy.D. courses are tied into this framework: the benchmark levels become your course goals, and the course requirements ask you to perform (i.e., show you can use effectively in action) using the content of that course to demonstrate the competency level. You also have the option to define your own competency and the benchmarks to meet it. As a Psy.D. student at Antioch, you will have an electronic portfolio in which these key performances will be archived as you go through the program. Students who enter the program with a mental health-related master's may take a one-credit elective course, Prior Learning Assessment, to determine whether some levels of competency can be demonstrated on entry to the program. The portfolios help assess and advise students, help the Psy.D. faculty continuously improve the program, and help outside accreditors (e.g., APA) to see that Antioch trains competent psychologists.

Clinical Training Sequence

Clinic and Clinical Coursework

The clinical training sequence is enrollment in the theoretical orientation concentrations concurrent to carrying clients in the University's training clinic. The clinical aspect of the concentrations allows further clinical training.

Community Clinical Practicum (Pre-internship Option)

Students then complete at least 800 hours in a community setting. They may elect to apply these hours for licensure in the state of Washington. Washington state licensure rules allow students to accumulate practice hours while enrolled in a doctoral program. Therefore, students may elect to accumulate up to 1,500 hours prior to award of the doctoral degree. Your training in the clinic in your concentrations and in your community clinical practicum may be counted toward licensure.

Internship

The clinical training sequence culminates in an Association of Psychology Postdoctoral and Internship Centers (APPIC) and/or APA style internship. You must complete your internship (1,500 hours) in two years (half time) or one year (full time).

If you choose, you may apply for an internship through the APPIC national internship placement program.

Application Process

Apply early and ensure all required materials are on file by the priority application deadline. When the Admissions Office has received all required application materials, an admissions committee will review your application and decide whether you are a finalist.

Your application materials should demonstrate:

- critical thinking skills
- graduate-level writing skills
- your ability to complete a rigorous doctoral program

Admission is selective. Finalists are invited for a campus interview. The director of recruitment and admissions decides admission in consultation with appropriate faculty. The director's decisions are final.

For additional assistance with the application process, contact the Admissions Office at 206-268-4202 or admissions.aus@antioch.edu.



Priority Application Deadline

Jan. 15

Completing your application with all documentation, outlined on the checklist below, by Jan. 15 guarantees you will be notified by April 1.

Applications received after the deadline are welcome, but considered on a space-available basis.

Your Application Checklist

- Application for admission (pages 13-14) and \$50 application fee/\$25 for online applications
- Official transcripts from all colleges and universities attended (Use request form on page 21)
- Academic prerequisites as outlined (page 19)
- Two letters of recommendation (pages 15-16)
- Documentation of 100 hours of practical experience (page 19)
- Admission essays
- Documentation of relevant professional experience (pages 17-18)
- International students – see page 10

Academic Prerequisites

Complete one of the following:

(1) A master's degree in a mental health-related field within the last 10 years. Eligible master's degrees include: marriage and family therapy, mental health counseling, clinical social work and art therapy. If you completed your degree more than 10 years ago, an exception may be granted. Contact the Admissions Office for more information.

–OR–

(2) A bachelor's degree in psychology completed within the last 10 years, with a GPA of at least 3.0 or higher on a 4.0 scale.

–OR–

(3) A bachelor's or master's degree in other fields with four prerequisite courses completed within the last 10 years with a minimum grade of B:

- Theories of Personality
- Abnormal Psychology
- Developmental Psychology
- Introduction to Statistics

(One of the four prerequisite courses may be in progress at the priority application deadline.)

Additional Admission Requirements

- **Completion of 100 hours of volunteer or professional experience** in a helping relationship role in an educational and/or human services setting
- **Two letters of recommendation:** one from a professional who supervised you in a human services setting; one from an academic instructor who can best assess your capabilities and readiness to enter a clinical doctoral program
- **Documentation of relevant professional and volunteer experience**
- **Documentation of professional affiliations, publications and licensure**

How to use the AUS fillable forms for your application

Type your information into the appropriate fields on the form. You can use the tab key to move to the next field.

Digital signatures

When you click on the signature field, you can follow the prompts to create a new signature or access an existing one. The advantage to this is that you can then save your finished form as a pdf and email directly to: admissions.aus@antioch.edu.

Hand signature

Print out your filled form (or print out the blank form and fill in by hand), sign, date and mail to: Admissions Office
Antioch University Seattle
2326 Sixth Ave.
Seattle, WA 98121

You can also scan your signed form as a pdf and email as above.

Please note that all application materials become the property of Antioch University.

Transcripts

Official transcripts must be submitted from each institution attended, even if transfer units appear on another document. If you attend(ed) an institution with pass/fail grades, you should request that the registrar attach any accompanying narrative evaluations. It is your responsibility to see that all transcripts reach the Admissions Office by the priority application deadline.

Admission Essay Instructions

Submit a typewritten, double-spaced essay with your application. Please write a 1-to 2-page response for each question and clearly number your response for each question.

1. In what ways has your academic and practical experience prepared you for becoming a clinical psychologist? What do you see

as your potential strengths and areas of growth as a clinical psychologist?

2. In what ways has your life history and personal experience contributed to your desire to become a clinical psychologist?
3. Have you engaged in your own personal counseling/therapy? In what ways do you see this as an important component toward becoming an effective clinical psychologist?
4. Why do you wish to attend Antioch for your doctoral study? What will be your areas of greatest challenge in undertaking doctoral study at this time? What forms of support will you use to meet those challenges?

Prior Graduate Work

Graduate credits earned at regionally accredited institutions are accepted toward Antioch's Psy.D. degree as follows:

Master's in Mental Health Field

Applicants who completed a master's degree in a mental health-related field may receive up to 24 quarter credits toward the doctoral program requirements:

- Eligible master's degrees include, but are not limited to, the following mental health-related fields: marriage and family therapy, mental health counseling, clinical social work and art therapy.
- Courses are reviewed for equivalent content on a course-by-course basis.
- You may submit syllabi from your master's level classes within your first year of the Psy.D. program if you feel additional courses should be waived.

Other Master's Degrees

Applicants with a master's degree in a field other than an approved mental health-related field may request a transfer credit evaluation.

- Courses are reviewed for equivalent content on a course-by-course

basis. Official transcripts and course syllabi for all requested courses must be submitted to the Admissions Office by the application deadline.

- Courses must carry a grade of B or higher.
- A maximum of 24 graduate-level quarter credits may be awarded.

Another Psy.D./Ph.D. Program

Applicants who have started a Psy.D./Ph.D. program approved by the American Psychological Association at another regionally accredited university may request a transfer credit evaluation.

- Courses are reviewed for equivalent content on a course-by-course basis. Official transcripts and course syllabi for all requested courses must be submitted to the Admissions Office by the application deadline.
- Courses must carry a grade of B or higher.
- Up to 24 quarter credits may be transferred.
- Courses from an institution that is regionally accredited but not APA approved will be considered on an individual basis.

Prior College Credit from Institutions Outside the U.S.

If you are a U.S. citizen or legal resident, and have some or all of your schooling outside the United States or Canada (except Quebec), you must have that institution send official transcripts and records directly to an evaluator. Certified translations and evaluation of international documents are required.

Please allow four to 10 weeks for the evaluation.

Request that the evaluation, together with the original transcript, be sent to the Admissions Office. International transcripts must be evaluated before admission. Contact the Admissions Office for assistance to locate transcript evaluation services. You may select a credential evaluator from the following website: www.naces.org.



International Student Admission

If you are applying for international student admission and a student visa, you must submit additional documentation to satisfy admission requirements:

- Certified and translated educational records, if your records are not in English
- Evaluation of international transcripts outside the United States and Canada (except Quebec). See above **Prior College Credit from Institutions Outside U.S.**
- Demonstration of English language proficiency – Submit official TOEFL (Test of English as a Foreign Language) test results. You must receive a minimum score of 550 (paper-based) or 213 (computer-based) and 79 on the Internet test. If you’ve completed education in the United States or Canada, this requirement may be waived. Contact the Admissions Office if your background may exempt you from this requirement.
- Financial certification – Document your ability to pay for your educational and living expenses for your program. You must submit documentation showing evidence that you are able to support your tuition and living expenses throughout your enrollment at Antioch University.

Contact the Admissions Office for more information at admissions.aus@antioch.edu.

Disability Services

Antioch University is committed to providing reasonable accommodations to qualified students with disabilities. The University seeks to ensure all students have an equal opportunity to benefit from and have access to programs and services.

Students who seek accommodations are responsible for providing documentation on the nature and extent of the disability. An appropriate accommodation for each student is determined on a case-by-case basis. Students with disabilities should contact the Disability Support Services Office at least three weeks prior to the beginning of the quarter for which the request is made, when possible. For more information, call 206-268-4151.

Security

Antioch University makes security information available to encourage safety on campus through awareness, clear channels of communication and an emphasis on reasonable precautions. Providing this information is in accordance with the Crime Awareness and Campus Security Act of 1990. You may obtain a copy of Antioch University Seattle’s crime statistics report at www.antiochseattle.edu/about/security.html

Antioch University Seattle does not discriminate on the basis of race, color, sex, ancestry, national origin, religion, handicap, age, sexual orientation, family status or disability in recruiting and admitting students, awarding financial aid, recruiting and hiring faculty and staff, or operating any of its programs and activities as a matter of policy, and in accordance with the Civil Rights Act of 1964, Title IX of the Education Amendment of 1972, and other state and federal laws.

Financial Assistance – Making Antioch Affordable

To consider attending Antioch, first assess the value. Antioch offers a rich experience at comparable tuition rates. The Financial Aid Office can help you gather information and explore your options.



Applying for Financial Aid

Applying for financial aid takes approximately six to eight weeks. Be sure to begin the application process early. To apply for financial aid, you will need to:

Complete the Free Application for Federal Student Aid (FAFSA). You may complete this online at www.fafsa.ed.gov Antioch University Seattle's school code is **E00555**.

Federal financial aid programs available include:

- Perkins Loan
- Stafford Loan (subsidized and unsubsidized)
- Work study

To qualify, you must:

- Demonstrate financial need through the application process
- Be accepted for admission
- Register at least half time
- Be a U.S. citizen/national, a permanent resident or an eligible non-citizen
- Not be in default status on previous loans or aid
- Be registered for Selective Service (if male)

For more information or assistance, please contact the Financial Aid Office at 206-268-4010 or financialaid.aus@antioch.edu.

Psy.D. Fellowships

Four fellowships are available for first-year Psy.D. students entering with a master's degree in a mental health related field. Psy.D. fellows work 15 hours per week, assisting core Psy.D.

faculty with teaching and research projects, during the first year of the program.

Psy.D. fellows receive a quarterly stipend totaling to approximately \$15,000 a year, and must be enrolled in 9 credits per quarter. For more information, contact the Admissions Office.

Graduate Assistantships

Antioch offers graduate assistantships annually to new students starting masters-degree programs. Graduate assistants work on campus 10 to 20 hours per week and gain valuable experience while paying off a substantial portion of their annual costs. For more information, contact the Financial Aid Office.

Scholarships

Antioch University Seattle offers various institutional scholarships to new students ranging from \$500 to \$5,000 per year. Selection criteria vary. To find out more, contact the Financial Aid Office.

Antioch has developed a scholarship database that can connect you to more than 500 outside scholarship opportunities. It is available online at www.antiochseattle.edu/newscholarships.

Another free resource for scholarships is www.thewashboard.org.

Loans Options Not Based on Need

The unsubsidized Federal Stafford Loan and private loan programs are available if you do not meet the federal guidelines for financial need.

Payment Plans

Antioch's payment plan allows you to make three payments during the quarter. For more information, contact the Student Accounts Office at 206-268-4009.

Employer Reimbursement

Some employers offer tuition assistance programs. If your employer will assist with some or all of your tuition costs, contact the Student Accounts Office at 206-268-4009 to make arrangements.

Program Costs

The Psy.D. program at Antioch University Seattle is 150 quarter credits (157 for Art Therapy concentration).

Tuition for 2011-12 for a full time student is \$745/credit x 8 = \$5,960/quarter or \$23,840 per year for students who attend four quarters/year. There is no difference in the tuition rate for part time students; they pay \$745/credit. There are general fees paid by every student including the student services fee and the technology fee. The student services fee is \$105 per quarter for full and half-time students and \$65 for less than half time. The technology fee is \$30/quarter. Additionally, Psy.D. students pay a \$200 internship fee when they are at this stage in their program. Psy.D. students also pay a \$20 annual liability insurance fee.

Visit www.antiochseattle.edu/futurestudents/aid/typical.html for tuition rates.

Psy.D. Application for Admission



1. For which quarter are you applying? Fall Year 20_____

2. Have you applied to Antioch University Seattle previously? No Yes If so, which quarter? _____

For office use:

3. Personal Information

Legal Name _____
LAST FIRST MIDDLE INITIAL

Any Previous Name(s) _____

Mailing Address _____

City _____ State _____ Zip _____

Phone (Home) _____ (Cell) _____

Phone (Work) _____ E-mail _____

Will you, or have you, applied for financial aid? Yes No

4. Personal Identification Information

Social Security Number _____ Date of Birth _____

5. Ethnicity and Gender Information *Submission of this information is optional. It is used to determine the effectiveness of efforts to provide equal education opportunity. These are federally designated categories.*

Ethnicity: Are you Hispanic or Latino? Yes No

Select One or More Races: American Indian or Alaskan Native Black or African American Native Hawaiian or Pacific Islander
 Asian White Non-resident Alien

Gender: Male Female

6. Country of Citizenship _____

If not U.S. citizen, specify visa status _____

Attach a copy of your permanent resident card or other documentation of your visa status.

7. Is English your first language? Yes No If no, please list your first language _____

If English is not your first language, have you taken TOEFL? Yes No If yes, your TOEFL score _____

If no, anticipated test date _____

8. Colleges and Universities Attended *List all colleges and universities attended, starting with most recent first. Be sure to list any previous Antioch locations attended. Provide official transcripts for all institutions you have attended. If you attended college outside U.S., please see page 8. Attach additional pages as needed.*

Name of Institution	City/State	Dates Attended	Credits Earned or Degree Awarded
---------------------	------------	----------------	----------------------------------

9. Have you ever been convicted of a felony or gross misdemeanor? Yes No _____

(A conviction will not necessarily bar admission but will require additional documentation prior to a decision)

Enclose \$50 non-refundable application fee. The fee to submit your application online is \$25.

I understand my application is not complete until I have submitted all required admission materials. All materials are due by the application deadline. I certify the information contained in this application is complete and true. I understand misrepresentation or omission of information may result in denial of admission.

Applicant Signature _____ Date _____

All application materials become the property of Antioch University Seattle.

Application Survey

Thank you for your interest in attending Antioch. To help Antioch provide the best services possible to prospective applicants, please take a few minutes to answer the following questions. Your assistance is appreciated.

Please check all that apply

1. I became informed about Antioch University Seattle's programs through

- Website for Antioch University Seattle
- Information sessions
- Campus visit with admission staff
- Open house
- Antioch faculty
- Antioch student
- Antioch alumni
- Antioch staff
- Other (please specify) _____

2. The following person(s) influenced my decision to apply to Antioch University

- Co-worker or supervisor
- Friend or relative
- College adviser/faculty member (please list name and program) _____
- Alumni (please list name and program) _____
- Other (please specify and list name) _____
- No single individual influenced me

3. What about Antioch University prompted you to apply?

- Reputation
- Location
- Distinctive programs
- Affordability
- Quality of faculty
- Convenience of attending
- Antioch's mission/philosophy
- Other (please specify) _____

4. Please list other programs and schools to which you are applying.

5. The Admissions Office wants to make it as easy as possible to learn about and apply to Antioch. Please provide any feedback based on your experience (explain here or e-mail admissions.aus@antioch.edu).

Section III

A. Please provide candid ratings of the applicant’s characteristics on each of the following eight qualities. Check the box next to the number that best summarizes your impression of the applicant. For any ratings of 2 or less, please provide an explanation in the comments section below.

<p>Intellectual Abilities: (uses abstract and critical thinking; is intellectually curious; is flexible and objective; actively engages with new knowledge; is reflective)</p> <p><input type="checkbox"/> 1 Minimal demonstration <input type="checkbox"/> 2 Adequate demonstration <input type="checkbox"/> 3 Strong demonstration <input type="checkbox"/> 4 Exceptional demonstration <input type="checkbox"/> N/A No basis for evaluation</p>	<p>Cultural Awareness and Inclusion: (appreciates influence of culture; communicates respect for others’ worldviews; uses language and inter-personal behavior appropriate to and respectful of diverse cultural identities)</p> <p><input type="checkbox"/> 1 Minimal demonstration <input type="checkbox"/> 2 Adequate demonstration <input type="checkbox"/> 3 Strong demonstration <input type="checkbox"/> 4 Exceptional demonstration <input type="checkbox"/> N/A No basis for evaluation</p>
<p>Communication Skills: Writing (writes clearly; presents ideas in an organized fashion; presents written work of graduate-level quality)</p> <p><input type="checkbox"/> 1 Minimal demonstration <input type="checkbox"/> 2 Adequate demonstration <input type="checkbox"/> 3 Strong demonstration <input type="checkbox"/> 4 Exceptional demonstration <input type="checkbox"/> N/A No basis for evaluation</p>	<p>Social Responsibility: (is aware of social, political and economic inequalities and their educational effects; shows willingness to address needs of underserved populations; is willing to examine the social impact of personal and professional choices)</p> <p><input type="checkbox"/> 1 Minimal demonstration <input type="checkbox"/> 2 Adequate demonstration <input type="checkbox"/> 3 Strong demonstration <input type="checkbox"/> 4 Exceptional demonstration <input type="checkbox"/> N/A No basis for evaluation</p>
<p>Communication Skills: Speaking (articulates ideas effectively in spoken form; is congruent in verbal and non-verbal communication)</p> <p><input type="checkbox"/> 1 Minimal demonstration <input type="checkbox"/> 2 Adequate demonstration <input type="checkbox"/> 3 Strong demonstration <input type="checkbox"/> 4 Exceptional demonstration <input type="checkbox"/> N/A No basis for evaluation</p>	<p>Leadership: (demonstrates initiative, vision, responsibility; works toward win/win problem resolutions)</p> <p><input type="checkbox"/> 1 Minimal demonstration <input type="checkbox"/> 2 Adequate demonstration <input type="checkbox"/> 3 Strong demonstration <input type="checkbox"/> 4 Exceptional demonstration <input type="checkbox"/> N/A No basis for evaluation</p>
<p>Openness to Feedback: (is non-defensive in receiving/responding to feedback; is willing to admit mistakes; is flexible and willing to change)</p> <p><input type="checkbox"/> 1 Minimal demonstration <input type="checkbox"/> 2 Adequate demonstration <input type="checkbox"/> 3 Strong demonstration <input type="checkbox"/> 4 Exceptional demonstration <input type="checkbox"/> N/A No basis for evaluation</p>	<p>Interpersonal Skills: (demonstrates empathy, patience, respect, caring and a sense of humor; is willing and able to tolerate ambiguity; maintains appropriate boundaries)</p> <p><input type="checkbox"/> 1 Minimal demonstration <input type="checkbox"/> 2 Adequate demonstration <input type="checkbox"/> 3 Strong demonstration <input type="checkbox"/> 4 Exceptional demonstration <input type="checkbox"/> N/A No basis for evaluation</p>

B. Comments: Please comment further on the applicant’s strengths and areas for growth as a prospective student. You may attach additional pages if necessary.

Signature of Recommender/Credentials

Date

Professional Experience for Psy.D. Admission



Name of Applicant _____

Relevant Employment and Volunteer Experience

Please list professional and/or volunteer experience relative to the field of clinical psychology. List relevant experience during the last five years, beginning with most recent experience. A resume may be submitted as a supplement but not as a substitute.

Dates: From _____ to _____

Employer/Volunteer Organization _____

Position _____

Supervisor's Name _____ Title _____

Brief Description of Responsibilities _____

Dates: From _____ to _____

Employer/Volunteer Organization _____

Position _____

Supervisor's Name _____ Title _____

Brief Description of Responsibilities _____

Dates: From _____ to _____

Employer/Volunteer Organization _____

Position _____

Supervisor's Name _____ Title _____

Brief Description of Responsibilities _____

Name of Applicant _____

Dates: From _____ to _____

Employer/Volunteer Organization _____

Position _____

Supervisor's Name _____ Title _____

Brief Description of Responsibilities _____

Statement of Credentials

Are you currently licensed in a mental health-related field? Yes No

If yes, please specify the following:

Type of license: _____

License number: _____

State in which license is issued: _____

Is your license in a mental health field pending? Yes No

If yes, anticipated date _____

Are you a currently registered counselor? Yes No

If yes, list state or province of registration _____

Are you a currently registered art therapist? Yes No

Please include a photocopy of your license and/or registration if you marked "yes" above.

Professional Affiliations

List memberships in professional organizations below and specify involvement as officer, committee chair or other leadership roles:

Organization	Years of Membership
--------------	---------------------

Publications, Awards and Other Distinctions

Psy.D. Experience and Prerequisites



Name of Applicant _____

Practical Experience

Please state how you have met the minimum admission standards of at least 100 hours of practical experience working or volunteering in a mental health, human services or educational agency, serving in a counseling-related capacity. If you worked at more than one agency, please attach additional pages as necessary.

Name of Agency _____

Duties/Responsibilities _____

Dates: From: _____ To: _____ Total Training Hours: _____ Total Direct Contact Hours: _____

Supervisor's Name and Phone Number _____

Supervisor's Degree/Certification/Credentials _____

Academic Prerequisites

Specify how you have satisfied one of the academic prerequisite requirements below.

- A.** I have or will have a master's degree in a mental health-related field by program start date. This includes couple and family therapy, marriage and family therapy, mental health counseling, clinical social work or art therapy.

Please specify: Master's degree discipline _____

Institution _____ Date Earned _____

- OR-** **B.** I have or will complete a bachelor's degree in psychology within the last 10 years, with a GPA of 3.0 or higher on a 4.0 scale.

Please specify: Institution _____ Date Earned _____

- OR-** **C.** I have completed a bachelor's or master's degree in a field other than above, and I have completed the four prerequisite courses with grades of "B" or above within the last 10 years. To be eligible to apply, you must have completed at least three of the prerequisites. All four prerequisites must be completed by program start date.

Please specify: Institution _____ Date Earned _____

Please list the courses you have completed to meet the prerequisite requirements:

Course Title	Equivalent Course Title	Institution	Dept./Course No.	Term/Year	Grade
Introduction to Statistics					
Developmental Psychology					
Abnormal Psychology					
Theories of Personality					

Request for Official Transcript



To the Registrar: Please mail an Official Transcript to Admissions, Antioch University Seattle, 2326 Sixth Avenue, Seattle, WA, 98121-1814. In addition, if permitted, please FAX an official transcript prior to mailing. FAX: 206-268-4242.

Attention Student: Please print all information required below and submit to your previous academic institutions(s) as soon as possible to expedite admissions.

First Name: _____ Middle Initial: _____ Last Name: _____

Full Name at the time of attendance (if different from above) _____

Home Address: _____

City: _____ State: _____ Zip: _____

Phone: _____

Date of Birth (mm-dd-yy): _____ SSN: _____

College/University: _____

Address: _____

City: _____ State: _____ Zip: _____

Phone: _____ FAX: _____

(Check one) Year (s) I attended _____ or Year I graduated: _____

Notes (including cost of transcript, payable to information, etc.):

NOTE TO STUDENT: It is the student's responsibility to make sure that their "official" transcripts have been sent to and received by Antioch University Seattle. Most colleges and universities require advance payment for transcripts. Contact your previous institutions for the correct amount of their transcript fee and attach payment to this request.

Official transcripts are required for admission to Antioch University Seattle. The transcript must come directly from the sending institution to Antioch University Seattle. "Student Copy" transcripts are not acceptable.

Official transcripts are required from each institution attended, regardless if the credits appear on another school's transcript.

Provisional Admission: If admission is granted provisionally, based upon the review of an unofficial transcript, Official Admission will remain pending until the receipt of all official transcripts by the Admissions Office. If an official transcript has not been received by Antioch University Seattle by the end of the students first quarter of attendance, the student will be withdrawn from Antioch University Seattle until all their official transcripts have been received by the Admissions Office.

I hereby authorize you to release my Official Transcript to Antioch University Seattle.

Signature: _____ **Date:** _____

ANTIOCH UNIVERSITY

SEATTLE

2326 Sixth Ave.
Seattle, WA 98121-1814
www.antiochseattle.edu

Admissions Office

phone 206-268-4202
toll-free 888-268-4477
fax 206-268-4242
admissions.aus@antioch.edu

Financial Aid Office

phone 206-268-4010
toll-free 888-268-4477
fax 206-268-4242
financialaid.aus@antioch.edu

